



GS3100 - INSTALLATION REVIEW

Two Gedge Systems **GS3100** Batch Controllers mounted in a Rittal IP56 Steel Enclosure; the two **GS3100**'s are in turn connected to a 30,000Kg & 40,000Kg Silo. The two silos are mounted on Precision Transducer SSC 20t Stainless Steel Compression Load Cells, the load cell restraining assemblies fitted to each silo incorporate for both Lateral and Up lift restraint to forces in excess of 100 Kilo Newtons.



Rositas in Bendigo, Victoria, Australia

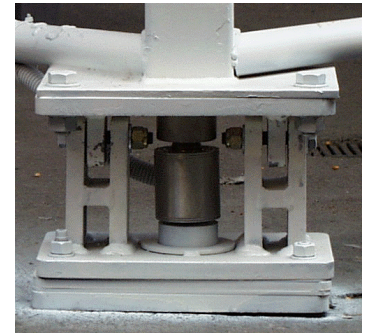


The complete Control System installed at Rositas was Supplied & Installed by EDI Solutions from Melton Victoria. EDI Solutions are one of Gedge Systems accredited OEM distributors, their Project Manager Mr Frank Oddi told me that the system incorporates two Direct Logic PLC's and two **GS3100**'s, Frank said that their function is to provide the high level of accuracy required for the manufacturing plants incoming bulk storage facility, the digital weight Indicators provide both the High & Low signals directly in to the PLC SCADA Management System.



This system enables Rositas management to accurately order and monitor-incoming stock levels with no wastage or excess stock. The system has also catered for the future growth of Rositas allowing for an addition **GS2150** Batch Controller that in the future will control the addition of multiple ingredients in to a ribbon mixer.

EDI Solutions offer their clients Total System Packages incorporating Engineering, Design, Systems & Process Control Applications. The advantage of incorporating GEDGE SYSTEM products is their Reliability, High Precision, Flexibility and Functionality providing users with a valuable return on investment for any Weighing and Batching project.



Gedge Systems

488 Church Street, Richmond, Victoria, 3121, Australia.
Phone +61 3 9429 8396. Fax +61 3 9429 8097

