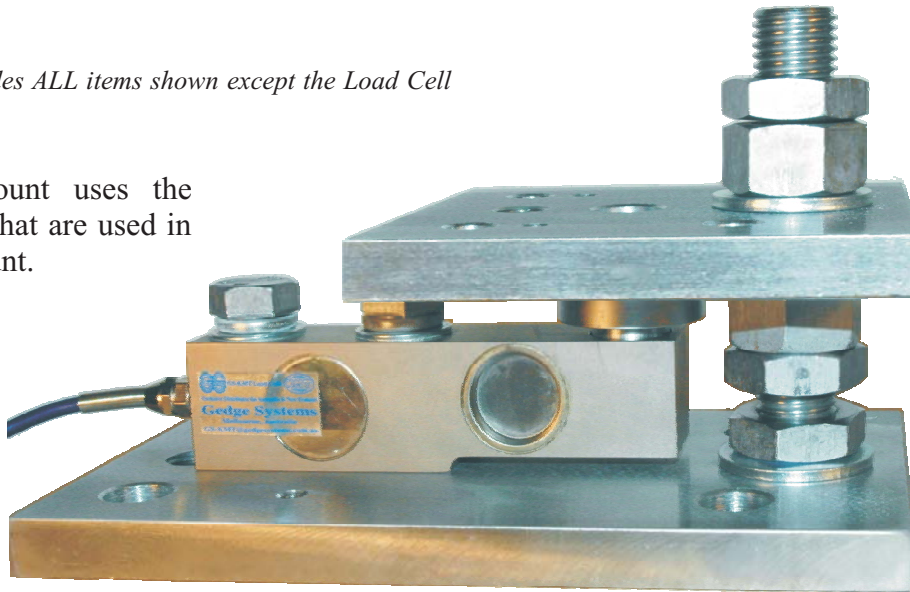


The MOUNT includes ALL items shown except the Load Cell

- The 5t Mount uses the same parts that are used in the 10t Mount.



KEY FEATURES & APPLICATIONS

- High Accuracy - by using Shear Beam load cells this Mount offers accuracy to 0.03% Full Scale - twice as accurate as some alternatives.
- A Low Cost solution for ALL Silos and Hoppers in ALL Industries.
- Strong heavy 15.5kg construction - Top and Bottom Plates are of 20mm C45 550MPa Steel.
- Corrosion Resistant - All parts Heavy Industrial Chrome Plated.
- Hardened 1,000MPa Chrome Plated Stainless Steel Load Button and Self Centering Load Cup included.
- Grade 8.8 M30 Anti-Uplift and Safety Post with Nuts & Washers included.
- Uses a SINGLE anti-uplift post - some designs use TWO posts instead with the prospect of one being OVERLOADED if the Top Plate is not DEAD LEVEL or the Posts not PERFECTLY adjusted and not equally sharing the UpLift Load.
- +/-3.5mm of Horizontal freedom for vessel thermal expansion. Beyond that, motion is constrained by load button, load cup & load cell rated to 50% of the 5t or 2.5t Load Cell. ie 2.5t & 1.25t
- Self centering force 5% of Load.
- 10t Safe UpLift Restraint.
- M30 Post for support of Empty Silo during Installation and as Safety Backup during Operation. Rated 10t

DESCRIPTION & ORDERING

Description:- The Gedge Systems-KMT GKMB02T05C Mount made of C45 550MPa Chrome Plated Steel and GK2102T05 & T2.5 5,000kg & 2,500kg IP68 Tool Steel Shear Beam Load Cells provide an Accurate, Strong, Reliable and Safe LOW COST Weighing Solution for all Outdoor or Indoor applications. The Mount design suits Silos, Hoppers and Bins but in reality it suits anything. The Mount includes "in-built" lateral constraint with a range of +/-3.5mm as well as AntiUplift Constraint.

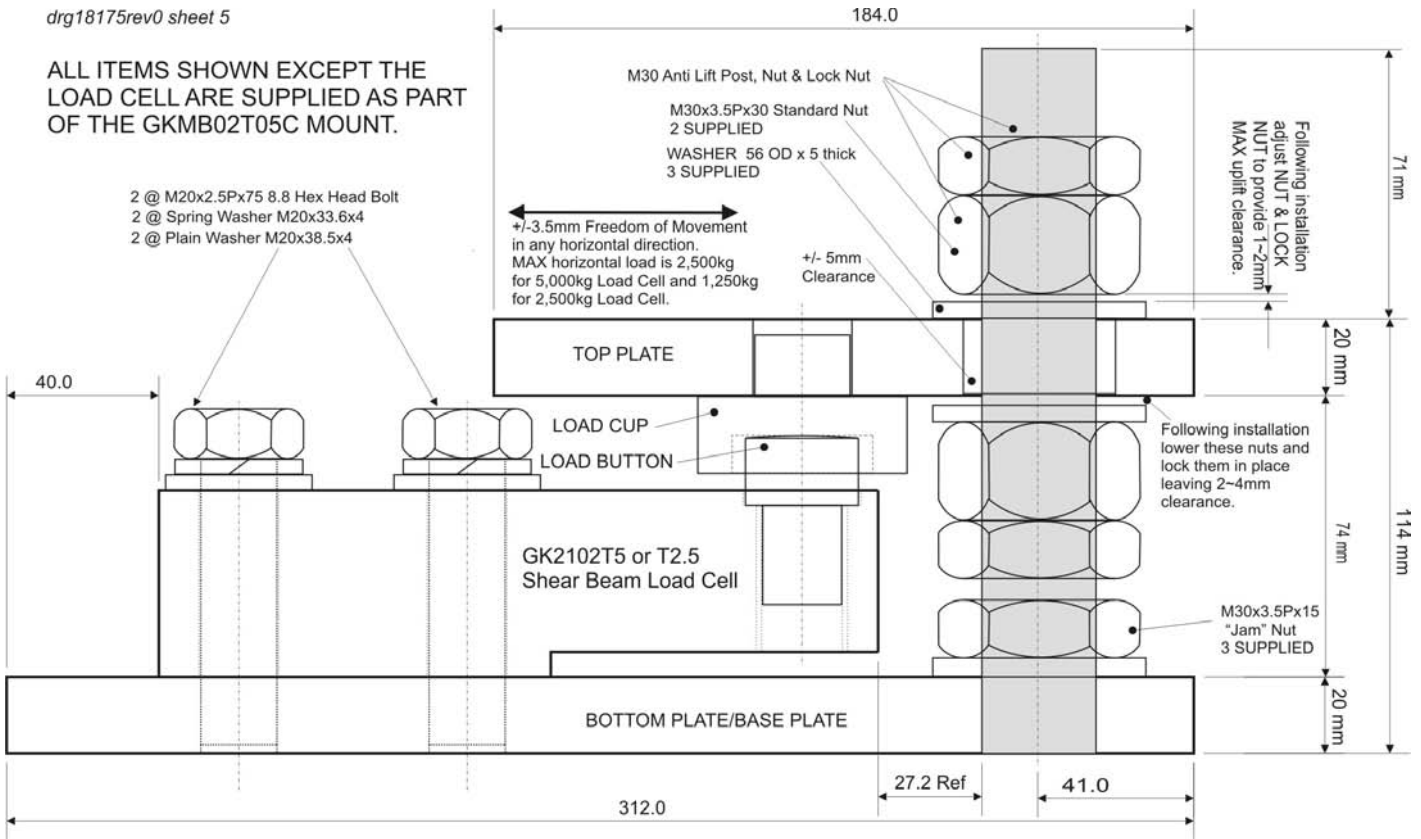
Ordering/Shipping:- The 15.5kg Mount is shipped "flat" for ease of shipping for assembly by the user. The 2.2kg GK2102T05 or T2.5 Load Cell, which is ordered separately, will be shipped with the Mount. **ORDER-**
GKMB02T05C Heavy Duty 5,000kg Mount {plus}
GK2102T5 5,000kg IP68 Sealed Shear Beam {or}
GK2102T2.5 2,500kg IP68 Sealed Shear Beam {plus}
EARTH300 Optional 300mm Earth Strap & Fittings

Gedge Systems, 488 Church Street, Richmond, Victoria, 3121 Australia
phone + 61 3 9429 8396 fax + 61 3 9429 8097 Email gs-kmt@gedgesystems.com.au
web site:- <http://www.gedgesystems.com.au>

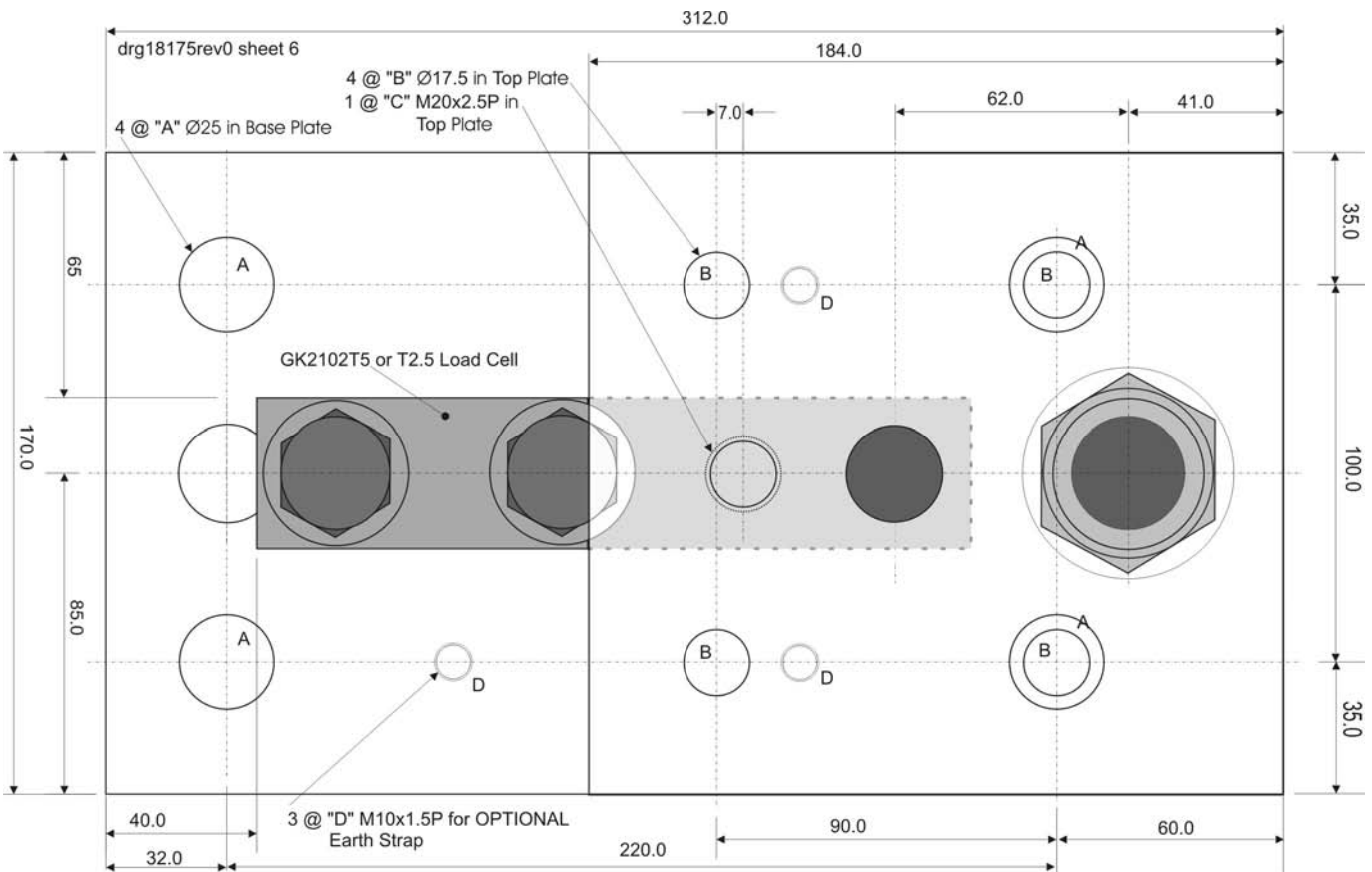
GKMB02T05C MOUNT & LOAD CELL OVERALL DIMENSIONS For full size drawings including a drawing of a silo FOOT PLATE suitable for use with this mount request drg18175rev0 sheets 3, 5 and 6

drg18175rev0 sheet 5

ALL ITEMS SHOWN EXCEPT THE LOAD CELL ARE SUPPLIED AS PART OF THE GKMB02T05C MOUNT.



drg18175rev0 sheet 6



Gedge Systems, 488 Church Street, Richmond, Victoria, 3121 Australia
web site:- <http://www.gedgesystems.com.au>