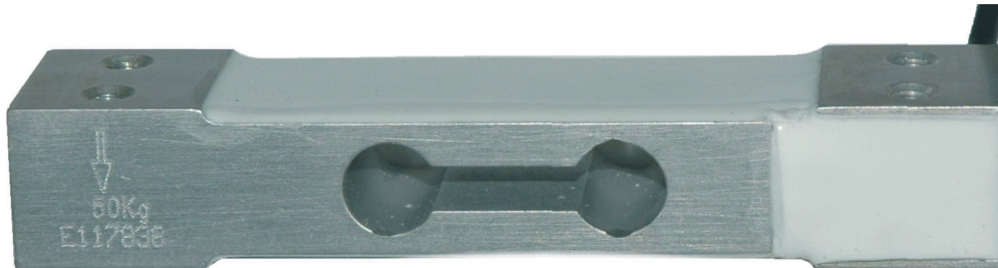




GS-KMT Load Cells



GS-KMT Model GK2130 Low Profile 2.5kg to 50kg Single Point Load Cell



KEY FEATURES

- Economically Priced.
- More Rugged than other Brands - 30mm Wide in 2.5kg-5kg instead of only 25mm.
- Large 250mm x 350mm Platform size.
- Matched outputs for ease of installation.
- Load Cells 100% tested to guarantee all specifications are met or exceeded.
- Includes Overload Protection Feature.
- High Accuracy 0.02% Combined Error.
- Industry Wide Standard dimension for easy replacement of other brands.
- All Threads M6.
- Popular Capacities from a Very Low 2.5kg to a high 50kg.
- More solidly constructed than normal for this market segment.
- High Grade Aluminium Marine Anodised.

APPLICATIONS

- Fruit & Vegetable Filling Machines.
- Fruit & Vegetable Grading Machines.
- Food & Chemicals Filling Machines.
- Low Capacity Hopper Scales.
- Inventory Control - by weight.
- Shipping Scales.
- Bench Scales & Postal Scales.
- Check Weighing Conveyor Scales.
- Any Weighing Application requiring an Economically Priced Solution.

Specifications

Capacity	2.5kg - 50kg	Environmental Protection Rating	IP65
Safe Service Load	100% Capacity	Material	Aluminium
Safe Overload	150% Capacity	Finish	Marine Anodised
Ultimate Load	300% Capacity	Construction	Bonded Seal
Safe Side Load	100% Capacity	Maximum Platform Size	250mm x 350mm
Full Load Output	2mV/V \pm 0.10%	Input Resistance	409 Ω \pm 6 Ω
Combined Error	<0.02% FS	Output Resistance	350 Ω \pm 3 Ω
Non Repeatability	<0.01% FS	Insulation Resistance	>5,000M Ω
Creep/Zero Return (30min)	<0.02% FS	Excitation (Recommended)	9VDC to 12VDC
Zero Balance	<2% FS	Excitation (Maximum)	18VDC
Span temperature effect	<15ppm/ $^{\circ}$ C		
Zero temperature effect	<26ppm/ $^{\circ}$ C		
Compensated Range	-10 $^{\circ}$ C to +40 $^{\circ}$ C		
Operating Range	-18 $^{\circ}$ C to +65 $^{\circ}$ C		

Cable type ... 4mm OD 4 core screened.
Cable length 0.4 metres.

Description & Ordering GK2130

Description:- The Gedge Systems-KMT Mechttronix GK2130 Single Point Load Cell has been designed from the ground up to offer class leading long term performance in Filling, Grading, Bagging and Low Capacity Scale Applications.

It is part of a very large range of High Quality Load Cells brought to Australia & New Zealand by Joint Venture Partners Gedge Systems & KMT Mechttronix.

The GK2130 is ruggedly built of the finest Aluminium Alloy and protected by a Marine Grade Anodised Finish. It has Industry Standard M6 attachment threads with provision for an overload stop screw. Industry Standard Mounting Dimensions enables the easy replacement of other brands by the GK2130.

In the easily damaged low capacity 2.5kg to 5kg range, the GS2130's width of 30mm rather than the narrower 25mm offered by other brands provides a more durable construction.

The large 250mm x 350mm Platform Size capability enhances the GK2130's usefulness in a wide range of batching and weighing applications.

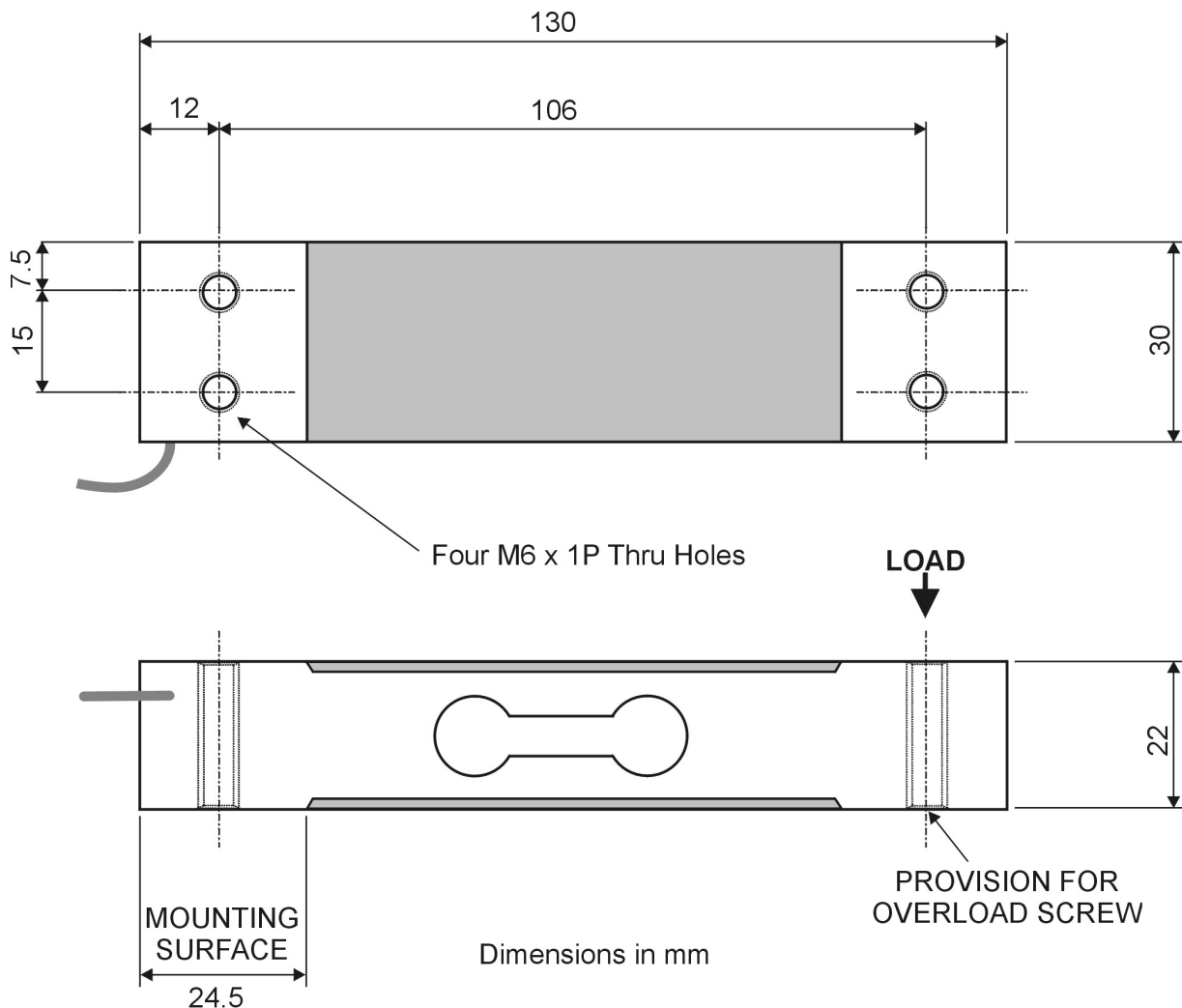
The GK2130 is an Economically Priced High Performance Load Cell for Weighing now and into the Future.

Ordering:-

- GK2130-2.5** 2.5kg Single Point Load Cell
- GK2130-3** 3kg Single Point Load Cell
- GK2130-5** 5kg Single Point Load Cell
- GK2130-10** 10kg Single Point Load Cell
- GK2130-15** 15kg Single Point Load Cell
- GK2130-20** 20kg Single Point Load Cell
- GK2130-30** 30kg Single Point Load Cell
- GK2130-50** 50kg Single Point Load Cell

**GEDGE SYSTEMS - Since 1978 Australia's Leading Manufacturer of High Accuracy Weighing Electronics
now bringing you Superior Quality GS-KMT Load Cells**

Dimensions GK2130



© Copyright 2005 GS Systems Pty Ltd ABN 18 737 137 544 - GS Standard 1 year Warranty - Specification subject to change without notice.

Gedge Systems, 488 Church Street, Richmond, Victoria, 3121 Australia
 phone + 61 3 9429 8396 fax + 61 3 9429 8097
 Email gs-kmt@gedgesystems.com.au